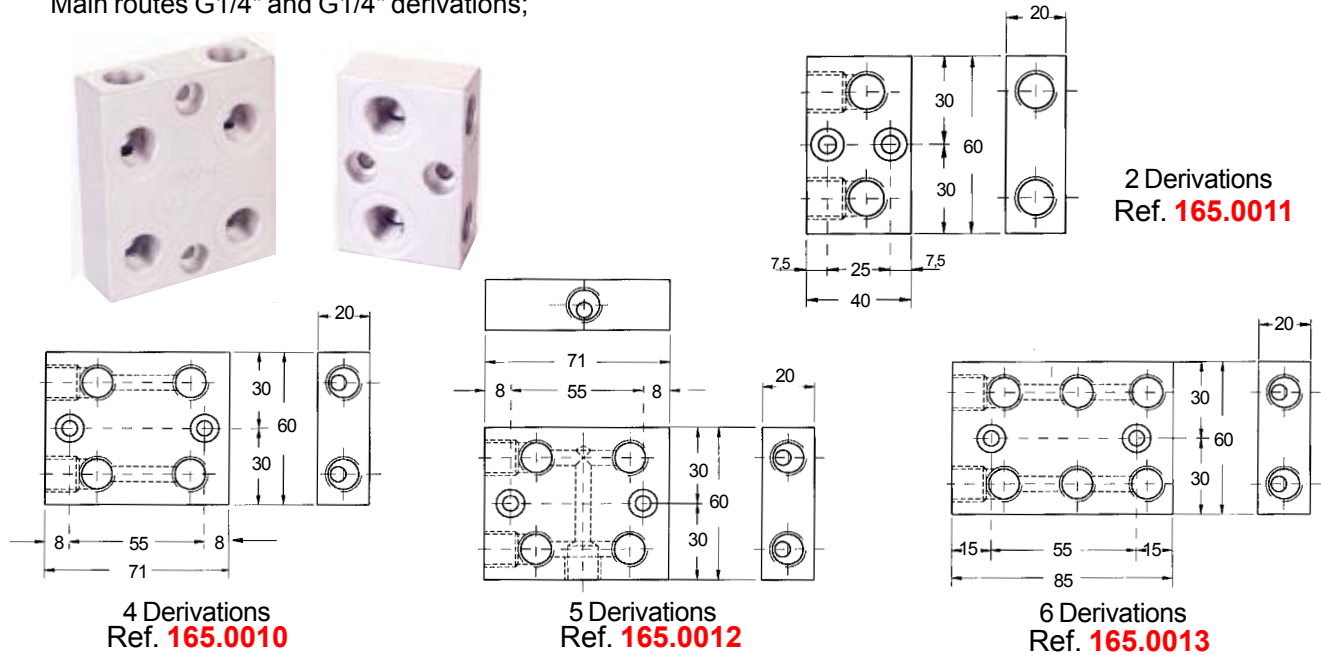


## DISTRIBUTING STRIPS OF 60X20

Series of aluminum strips hard anodizing of rectangular profile of 60X20 and fixation by means of screws DIN 912 of M5

Main routes G1/4" and G1/4" derivations;



## DISTRIBUTING STRIPS OF 35X22

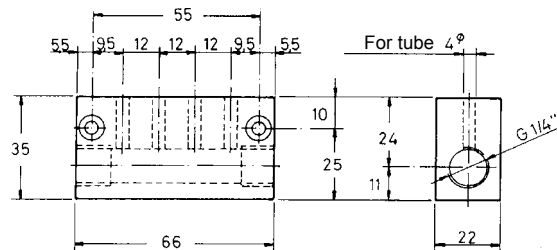
Series of aluminum strips hard anodizing of rectangular profile of 35x22 and fixation by means of screws DIN 912 of M4.

Nominal pressure 12bar

Pincipal via G1/4

Derivations connects tube 4

Ref. **440.0404**

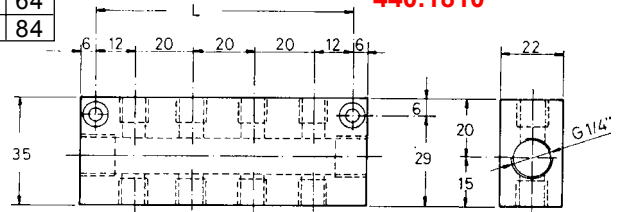
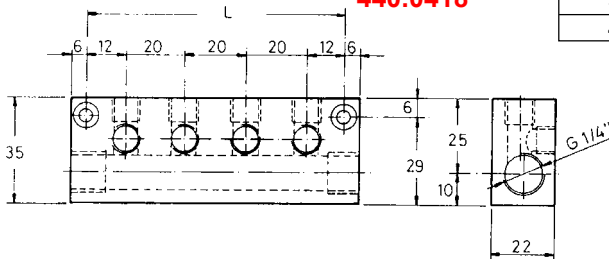


Pincipal via G1/4  
Derivations G1/8

Ref **440.0218**  
**440.0318**  
**440.0418**

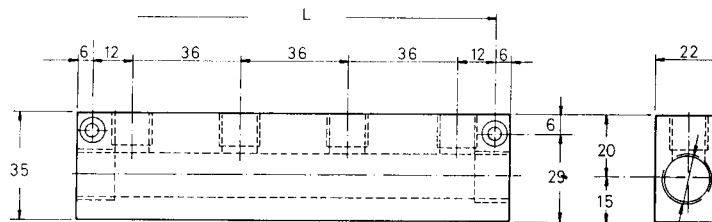
Connections by face	L
2	44
3	64
4	84

Ref **440.1806**  
**440.1808**  
**440.1810**



Pincipal via G3/8  
Derivations G1/4

Ref. **440.1402**  
**440.1403**  
**440.1404**



Derivations	L
2	60
3	96
4	132

### DISTRIBUTOR 3/2 HAND CONTROL

Distributor of sliding socket of 3 routes 2 positions, manual drive; connections of 1/8 - 1/4 - 3/8 - 1/2 - 3/4.

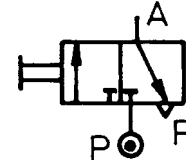
It offers rapidity in the disconnection and the escape to the atmosphere. Practice in the beginnings of the supply line like conectora of circuit. Robust, economic, with reduced volume in relation to its volume of step.

**Manufacture:** Body in brass, aluminum sleeve hard anodizing, meetings in NBR80, tire iron.

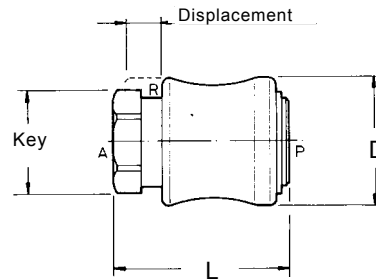
**Assembly:** In line, fixed pipe, position any

Pressure of Work: From 0 to 16 bar.

Permissible temperature From 10°C to 80°C



TYPE	SPIRAL G.	NOMINAL STEP	NOMINAL VOLUME (l/min)	L	D	KEY
<b>NV23R18</b>	1/8	6	750	43	25	17
<b>NV23R14</b>	1/4	7	1150	45	31	22
<b>NV23R38</b>	3/8	10	1880	48	35	24
<b>NV23R12</b>	1/2	12	2700	51	38	27
<b>NV23R34</b>	3/4	19	5800	66	49	36



### CIRCUIT SELECTOR

Valve of function or, dynamic operation by means of seat valve.

Conections: M5 and 1/8

Permissible temperature from -10° to 70°

Work presure: from 0,3 to 16 bar

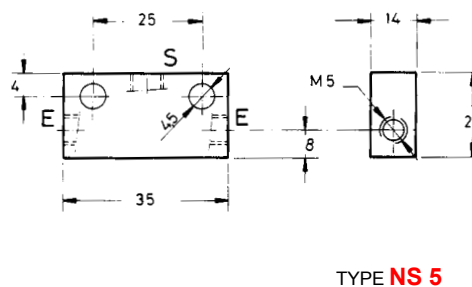
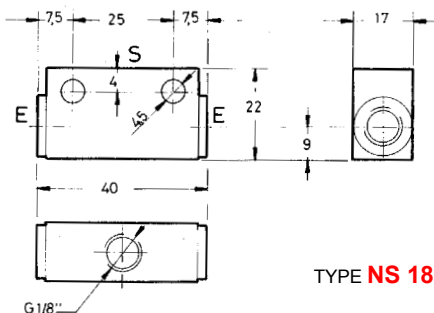
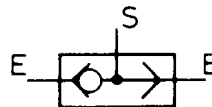
Diametro step orifici: In both types 3.

Flowed of control: Filtered, lubricated air or no.

Manufacture: Aluminium body hard anodizing, stainless valve, meetings in NBR.

It admits impurities in the air, maintaining the estanqueidad. Fast one in communicating the signal due to the small inertia of the valve.

Assembly on guard anyone, for low pressures is recomendable the horizontal position of routes E.



## COMPACT CYLINDER OF DOUBLE EFFECT

Cylinder of short race of double effect, with recovery means; diametro 32.

Nominal pressure: 10 bar.

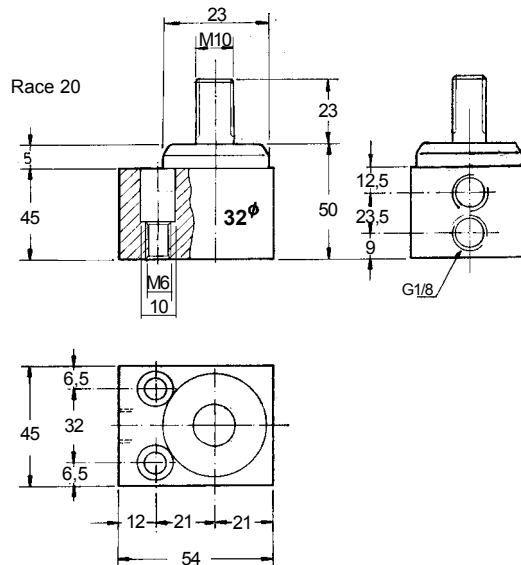
Permissible temperature: From -10° C to 70° C.

Flowed of control: Filtered air lubricated or no.

Position of work any.



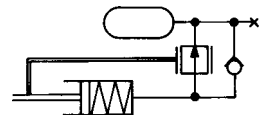
Body in aluminium treated stainless steel piston rod and means, together resistant NBR 80 To the oil and the lack of lubrication.



TYPE	PISTON	PUSH A 6 Bar	FORCE OF RETURN
<b>NCS3215</b>	32	20	7

## IMPACT SHOCK ABSORBER

Hidraulic shock absorber with regulation fixes and deceleration linear.



Useful race: 22 (Total 25)

Capacity of absorption of inertia: By cicle 105 Nm  
For hour 66.000 Nm

Applicable maximum force in the impact: 3.100 N

Speeds of work: From 0,15 to 3 m/s

Necessary time for the recovery of the piston rod: From 0,4 to 0,6 s.

Permissible temperature: From -10° C to 80° C.

Assembly on guard anyone.

Weigth: 300 gr

Duration: Average of life to maximum benefits 47x10 cycles.

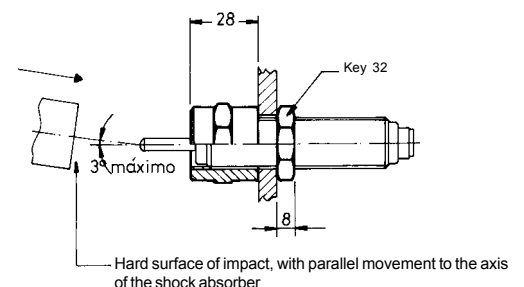
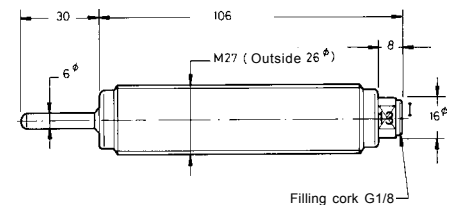
Construcción: Steel outside, bronzed, oxidizeable.

Installation: The surface of the object that hits has to be smooth and lasts.  
the race útil of 22 does not have to be exceeded.

Reference spiral top: **152.2711**

Reference Lock nut : **152.0027**

TYPES
<b>HT27-6-00</b>
<b>HT27-6-03</b>
<b>HT27-6-07</b>
<b>HT27-6-13</b>
<b>HT27-6-19</b>



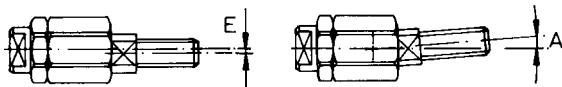
ROTULAS

Connection for the union of piston rods of cylinders and components of machines .

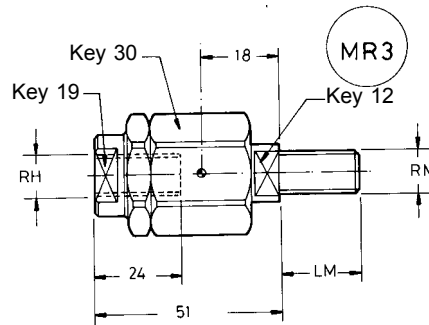
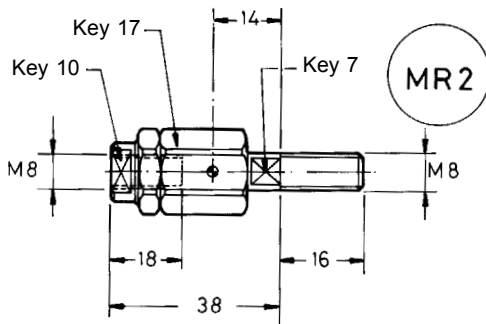
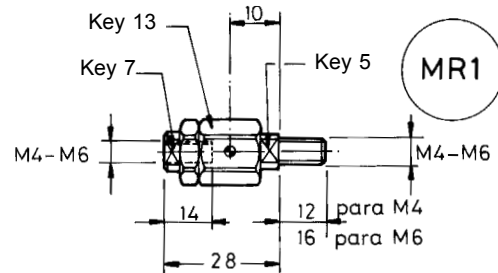
It allows radial and regular deviations assuring the longevity and smoothness operation of the elements united by the lozenge.

Construction: 100 steel lozenge and bearings of Mpa, with treatment against the gripado one, body of steel with galvanic treatment.

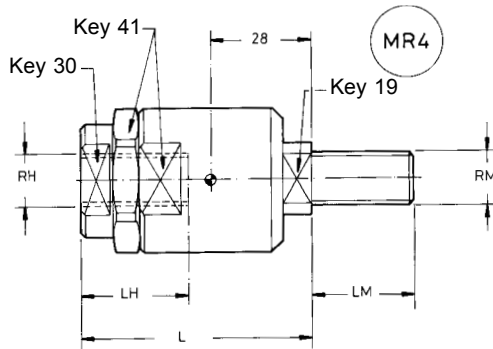
In types MR3 and MR4 it is recommended to use the spirals with fine step. Within the same type of lozenge the spirals can change.



Type	Radial deviation E	Angular deviation A	Fulli factored load (daN)	Weight (Kg.)
MR1	0,5	4°	125	0,02
MR2	0,5		250	0,05
MR3	0,7		500	0,2
MR4	1		1000	0,7



RH - RM	LM
M10	22
M10 x 1,25	
M12	24
M12 x 1,25	



RH - RM	L	LH	LM
M16	74	34	32
M16 x 1,50			
M20	82	42	40
M20 x 1,50			